



50 Hz

60 Hz



Stellar Pump

VISC Series

Vertical In-line Single Stage Centrifugal Pump
Close-Coupled

Product Brochure

Residential Water * Commercial Water * Industrial Water * Air-Conditioning Water * Circulations



VISC Series

Vertical In-line Single Stage
Centrifugal Pump

Product Features

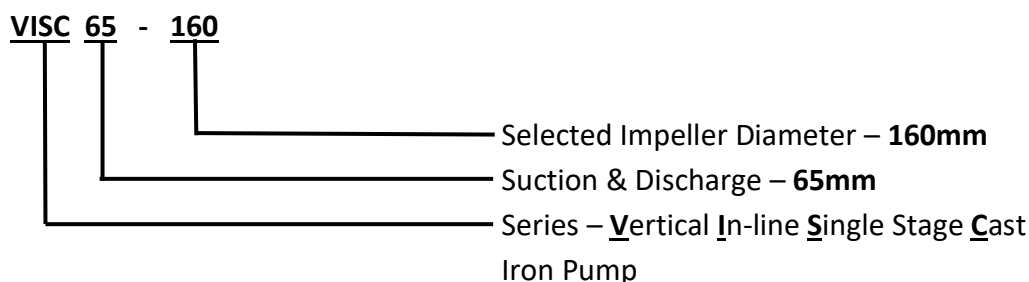
STELLAR VISC Series vertical in-line single stage centrifugal pumps are designed to save space in installation. The said series is closed coupled type where motor shaft is connected to pump shaft ensuring proper alignment. Highly interchangeable parts, cost economical, space saving, high quality & wide series of applications in residential sector, commercial establishments, industrial sectors, small air-conditioning systems & circulation applications.

Advantages & Benefits

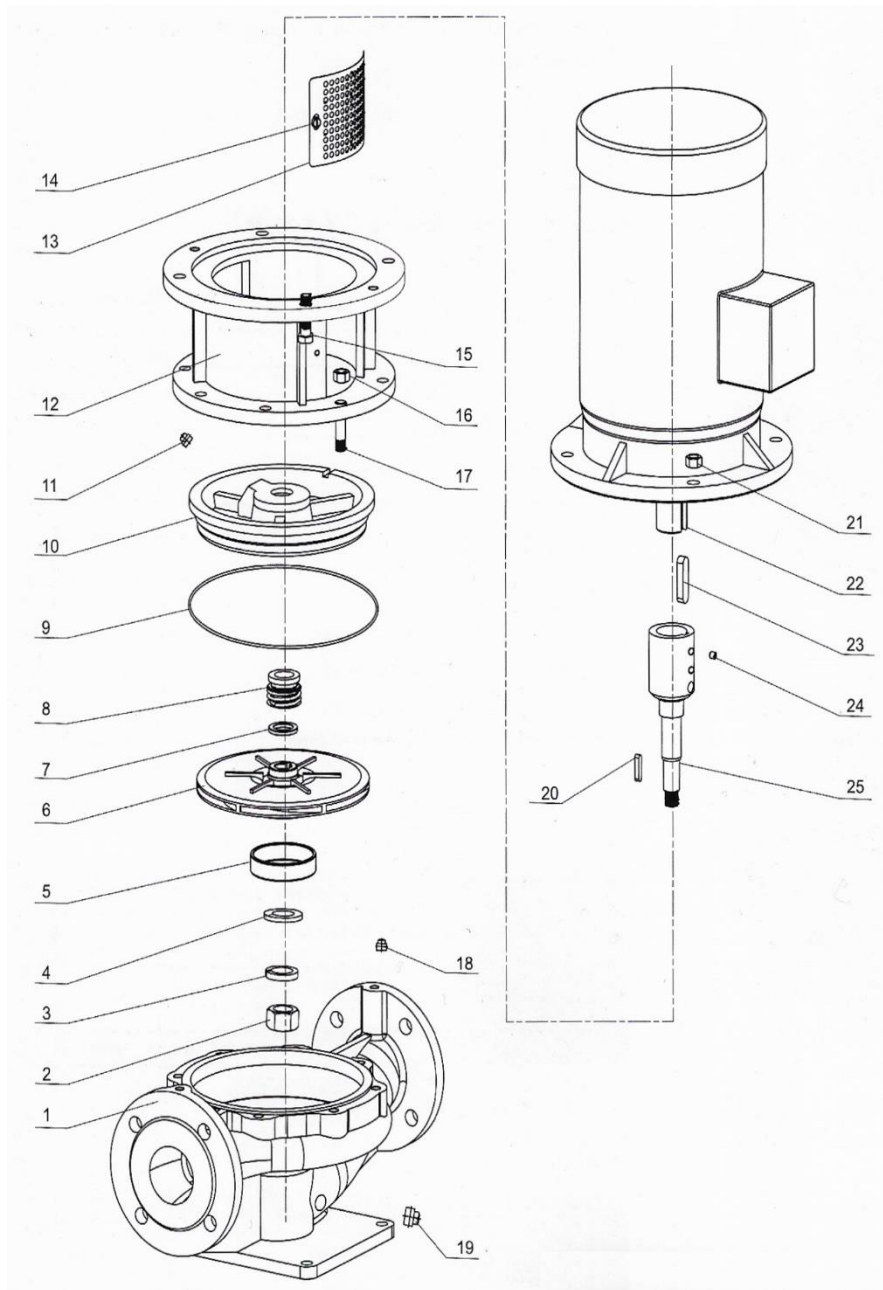
- **Built-in suction & discharge flange connections** in accordance to DIN 2501 PN16 GB
- **Heavy duty** cast iron pump volute casing suitable for working pressure of 10 bar. Working pressure of 16 bar is available on request.
- **Replaceable** front wear rings to ensure optimum pump efficiency.
- **Closed coupled** design where motor and pump shaft are properly connected ensuring proper alignment for smooth operation & space saving.

Model Identification

Example: **VISC 65 - 160**



Exploded Drawing



Item	Description
1	Pump Casing
2	Impeller Nut
3	Flat Washer
4	Spring Washer
5	Front Wear Ring
6	Impeller
7	Seal Seat
8	Mechanical Seal
9	Casing Gasket
10	Casing Cover
11	1/4 Plug
12	Adapter
13	Guard
14	Screw
15	Screw Bolt
16	Screw Nut
17	Screw Bolt
18	1/4 Plug
19	3/8 Plug
20	Key
21	Screw Nut
22	IEC Electric Motor
23	Key
24	Screw
25	Shaft

Major Parts Material

PUMP PARTS	STANDARD	OPTION ON REQUEST
Pump Volute	Cast Iron	Ductile Iron
Impeller	Bronze	Cast Iron, Stainless Steel ASTM304 & ASTM316
Pump Shaft	Stainless Steel ASTM420	Stainless Steel ASTM304, ASTM316 & ASTM1045
Shaft Seal	Mechanical Seal	-

Technical Information

Pump Capacity Ranges (Q)	4 m ³ /hr to 500 m ³ /hr
Pump Head Ranges (H)	8 meters to 150 meters
Speed	50Hz 2900 rpm (2 pole) or 1450rpm (4 pole) 60Hz 3500rpm (2 pole) or 1750rpm (4 pole)
Working Temperature Ranges	-10 deg. Celsius to 90 deg. Celsius
Max Working Pressure	10 Bar, 16 Bar on request
Fluid Medium	Non aggressive, clean water or liquids similar to physical properties of clean water

Applications

- **Clean Water Supply**
 - Transfer of water supply
 - Pressure booster for residential & commercial establishments, mid-rise buildings, etc.
 - Pressure booster for light industrial structures, factories, etc.
- **Air Conditioning Systems**
 - Light chilled & condenser water supply
 - Light cooling tower make up water
- **Irrigation & Agriculture**
 - Field & crops irrigation
 - Aqua farming
- **Circulation Systems**
 - Hot & cold water circulation pump