



50 Hz
60 Hz



Stellar Pump

VIMS Series



**Vertical In-line Multistage Stainless Steel
Centrifugal Pump
Close Coupled**

Product Brochure

Commercial Water * Industrial Water * Air-Conditioning Water * Municipality Water



VIMS Series

Vertical In-line Multi-Stage
Stainless Steel Centrifugal Pump

Product Features

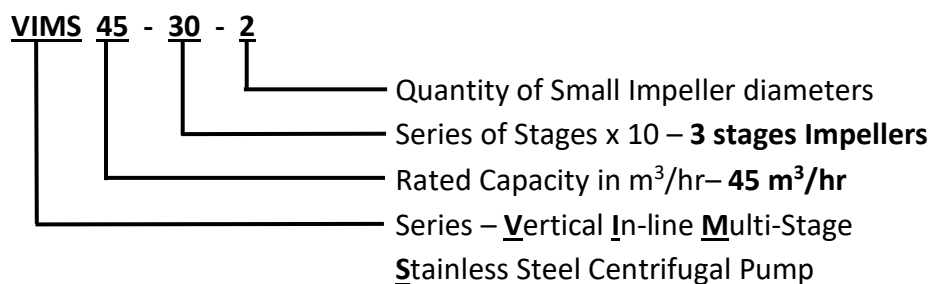
STELLAR VIMS Series Vertical In-line multi-stage stainless steel centrifugal pumps are designed for extreme high in head. The said series is closed coupled type where motor shaft is connected to pump shaft ensuring proper alignment. Cost economical, space saving, high quality & wide series of applications in commercial establishments, industrial sectors, municipal & water districts, irrigations and air-conditioning systems.

Advantages & Benefits

- Pump diffusers, impellers, and shaft are made of **stainless steel ASTM 304**.
- **Closed coupled** design where motor and pump shaft are properly connected ensuring proper alignment for smooth operation & space saving.
- **Built-in suction & discharge flange connections** for easy piping installation
- **Multi-stage design** built for extreme high head

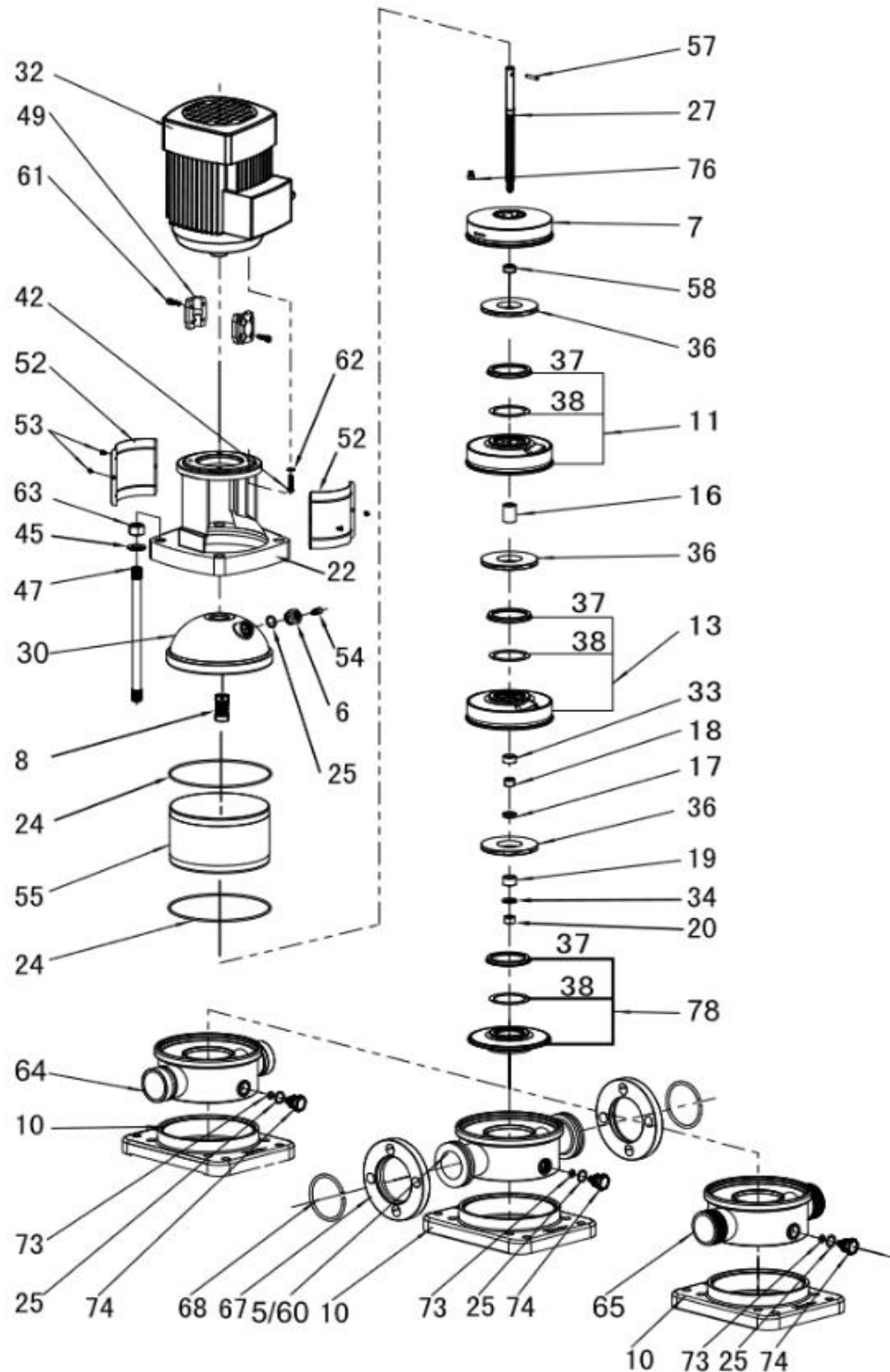
Model Identification

Example: VIMS 45-30-2



Exploded View

- 5 Flange inlet and outlet chamber
- 6 Air vent plug
- 7 Top diffuser
- 8 Mechanical seal
- 10 Base plate
- 11 Diffuser
- 13 Support diffuser
- 14 Inducer
- 16 Impeller sleeve
- 17 Short impeller sleeve
- 18 Wear ring
- 19 Inlet impeller cover
- 20 Nut M12
- 22 Nut M16
- 24 O-ring 169×3.3
- 25 O-ring 16×2.65
- 27 Pump shaft
- 30 Seal base (Cast iron series)
- 32 Motor
- 33 Long impeller sleeve
- 34 Gasket
- 36 Impeller
- 37 Choma cover
- 38 Choma
- 42 Blot
- 45 Gasket
- 47 Stay bolt
- 49 Coupling
- 52 Coupling guard
- 53 Screw
- 54 Air vent blot
- 55 Cylinder
- 57 Shaft pin
- 58 Locating sleeve
- 60 Common inlet and outlet chamber
- 61 Socket head cap screw
- 62 Washer
- 63 Bracket
- 64 Cutting ferrule joint inlet and outlet chamber
- 65 Pipe thread inlet and outlet chamber
- 67 Flange
- 68 Flange retaining ring
- 73 O-ring
- 74 Drain plug
- 76 Adjustment stake
- 77 Strap
- 78 Nut M8





VIMS Series

Vertical In-line Multi-Stage
Stainless Steel Centrifugal Pump

Major Parts Material

PUMP PARTS	STANDARD	OPTION ON REQUEST
Pump Diffuser	Stainless Steel ASTM304	Stainless Steel ASTM316
Impeller	Stainless Steel ASTM304	Stainless Steel ASTM316
Pump Shaft	Stainless Steel ASTM304	Stainless Steel ASTM316
Inlet & Outlet Seat	Cast Iron	Stainless Steel ASTM304 or ASTM316
Shaft Seal	Mechanical Seal	-

Technical Information

Pump Capacity Ranges (Q)	1 m ³ /hr to 240 m ³ /hr
Pump Head Ranges (H)	10 meters to 240 meters
Speed	50Hz 2900rpm (2 pole) / 60Hz 3500rpm (2 pole)
Normal Temperature Ranges	-15 deg. Celsius to 70 deg. Celsius
Hot Water Temperature Ranges	-15 deg. Celsius to 105 deg. Celsius
Max Working Pressure	16 Bar to 28 Bar
Fluid Medium	Non aggressive, clean water or liquids similar to physical properties of clean water

Applications

- **Clean Water Supply**
 - Transfer of water supply
 - Pressure booster for commercial establishments, high rise buildings, hotels, etc.
 - Pressure booster for industrial structures, factories, etc.
- **Municipal**
 - Water distribution in districts & municipality
 - Pressure booster
- **Fire Fighting Systems**
 - Automatic fire sprinkler systems
 - Fire hose cabinets & hydrants
- **Circulation Systems**
 - Hot & cold water circulation pump



Stellar Pump Australia

Kenwick, Western Australia, 6107
<http://www.stellarpump.com.au>

Authorized Distributor: