



50 Hz

60 Hz



Stellar Pump

HMCS Series



Horizontal Multi-Stage Stainless Steel

Centrifugal Pump

Close Coupled

Product Brochure

Residential Water * Commercial Water * Mid-Rise Buildings * Circulation



HMCS Series

Horizontal Multi-Stage
Stainless Steel Centrifugal Pump

Product Features

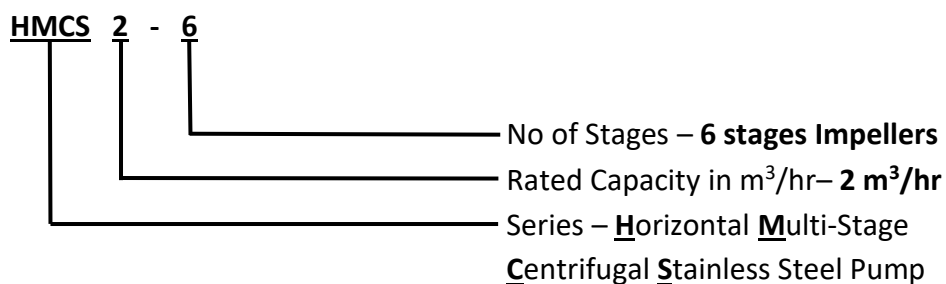
STELLAR HMCS Series Horizontal multi-stage centrifugal stainless steel pumps are designed for low pump capacity but high in head. The said series is closed coupled type where motor shaft is connected to pump shaft ensuring proper alignment. Cost economical, space saving, high quality & wide series of applications in residential sector, commercial establishments, low & mid-rise buildings & circulation systems.

Advantages & Benefits

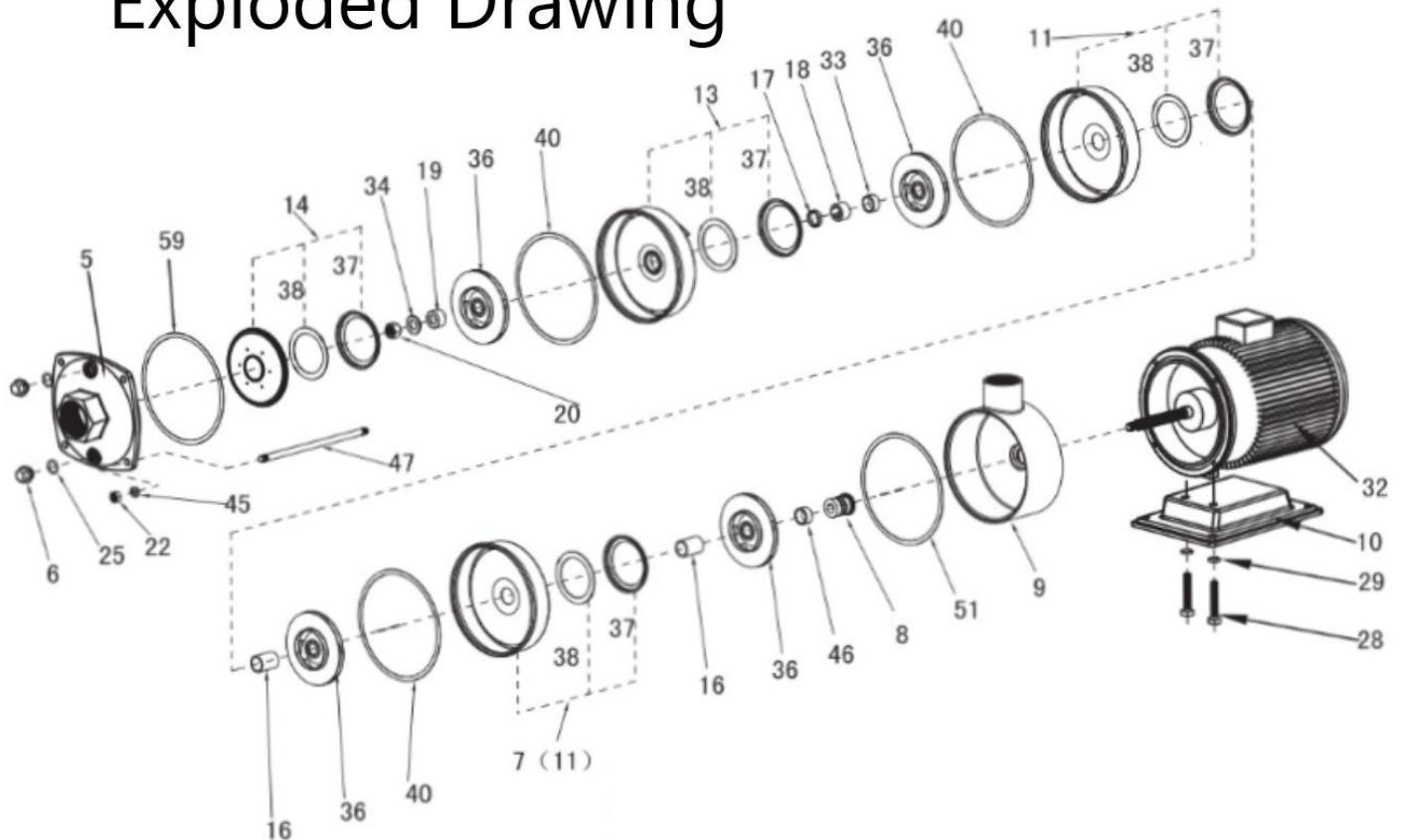
- Pump diffusers, impellers and shaft are made of **stainless steel ASTM 304**.
- **Closed coupled** design where motor and pump shaft are properly connected ensuring proper alignment for smooth operation & space saving.
- **Compact design & light weight** ensures easy piping installation.
- **Built-in** suction and discharge threaded port for simple piping installations.

Model Identification

Example: HMCS 2-6



Exploded Drawing



Item	Description
5	Inlet & Outlet Chamber
6	Plug
7	Outlet Diffuser
8	Mechanical Seal
9	Discharge
10	Motor Baseplate
11	Diffuser
13	Support Diffuser
14	Inducer
16	Impeller Sleeve
17	Impeller Sleeve
18	Bearing
19	First Impeller Cover
20	Nut
22	Screw

Item	Description
25	O-ring
28	Screw
29	Spring Washer
32	Electric Motor
33	Impeller Sleeve
34	Washer
36	Impeller
37	Neck Ring Cover
38	Neck Ring
40	Seal Plate
45	Spring Washer
46	Sleeve
47	Stay bolt
51	Seal Plate
59	Seal Plate



HMCS Series

Horizontal Multi-Stage
Stainless Steel Centrifugal Pump

Major Parts Material

PUMP PARTS	STANDARD	OPTION ON REQUEST
Pump Diffuser	Stainless Steel ASTM304	Stainless Steel ASTM316
Impeller	Stainless Steel ASTM304	Stainless Steel ASTM316
Pump Shaft	Stainless Steel ASTM304	Stainless Steel ASTM316
Inlet & Outlet Seat	Stainless Steel ASTM304	Stainless Steel ASTM316
Shaft Seal	Mechanical Seal	-

Technical Information

Pump Capacity Ranges (Q)	1 m ³ /hr to 30 m ³ /hr
Pump Head Ranges (H)	10 meters to 75 meters
Speed	50Hz 2900rpm (2 pole) / 60Hz 3500rpm (2 pole)
Normal Temperature Ranges	-15 deg. Celsius to 70 deg. Celsius
Hot Water Temperature Ranges	-15 deg. Celsius to 105 deg. Celsius
Max Working Pressure	10 Bar
Fluid Medium	Non aggressive, clean water or liquids similar to physical properties of clean water

Applications

- **Clean Water Supply**
 - Transfer of water supply
 - Pressure booster for residential & commercial establishments, mid-rise buildings, etc.
 - Pressure booster for light industrial structures, factories, etc.
- **Air Conditioning Systems**
 - Light chilled & condenser water supply
 - Light cooling tower make up water
- **Irrigation & Agriculture**
 - Field & crops irrigation
 - Aqua farming
- **Circulation Systems**
 - Hot & cold water circulation pump



Stellar Pump Australia

Kenwick, Western Australia, 6107
<http://www.stellarpump.com.au>

Authorized Distributor: