



50 Hz

60 Hz



Stellar Pump
HESC Series



End Suction Centrifugal Pump

Single Stage Back Pull-Out

Close-coupled

According to DIN24255 / BS EN733

Product Brochure

Residential Water * Commercial Water * Industrial Water * Air-Conditioning Water

Product Features

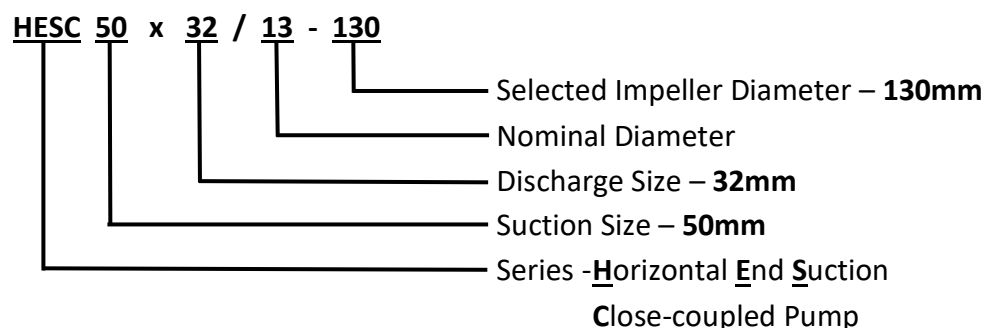
STELLAR HESC Series end suction centrifugal pumps are designed in accordance to DIN24255 and BS EN733. The said series is close-coupled type where motor shaft is connected to pump shaft ensuring proper alignment. Highly interchangeable parts, cost economical, space saving, high quality & wide series of applications in residential sector, commercial establishments, industrial sectors, small air-conditioning systems & irrigations.

Advantages & Benefits

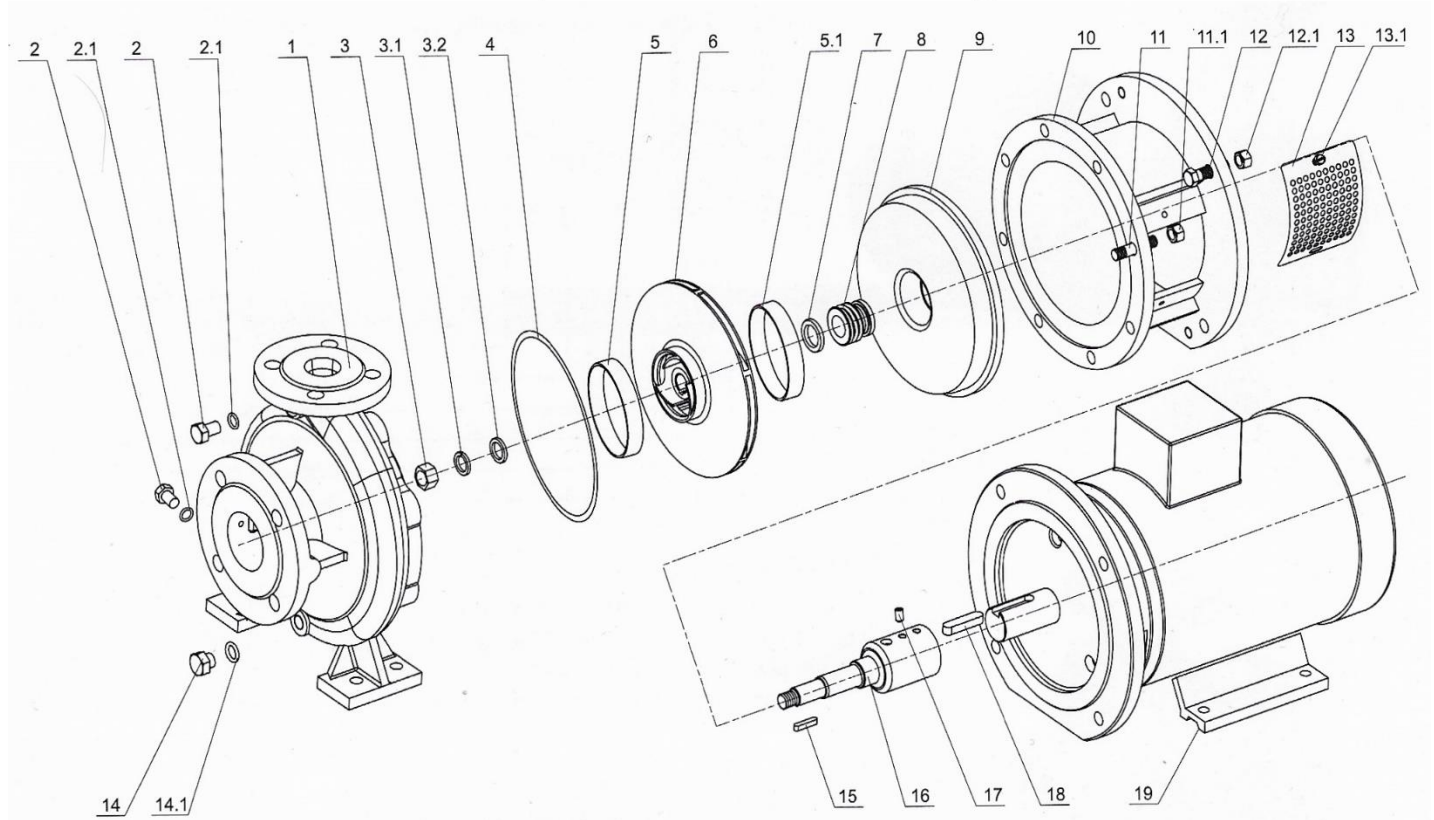
- Conforming to **DIN24255 & BS EN733** ensuring the interchangeability of parts with other pumps with same standard.
- **Back pull-out design** construction, allows easy removal of rotating assembly without disturbing the piping connections and pump volute casing.
- **Built-in suction & discharge flange connections** in accordance to DIN 2501 PN16 GB
- **Heavy duty** cast iron pump volute casing suitable for working pressure of 10 bar. Working pressure of 16 bar is available on request.
- **Replaceable** front and back wear rings to ensure optimum pump efficiency.
- **Close-coupled** design where motor and pump shaft are properly connected ensuring proper alignment for smooth operation & space saving.

Model Identification

Example: **HESC 50 x 32 / 13 – 130**



Exploded Drawing



Item	Description
1	Pump Casing
2	Plug
2.1	Plug Spacer
3	Nut
3.1	Flat Washer
3.2	Spring Washer
4	Casing Gasket
5	Front Wear Ring
5.1	Back Wear Ring
6	Impeller
7	Seal Seat
8	Mechanical Seal
9	Casing Cover
10	Adapter

Item	Description
11	Screw Bolt
11.1	Screw Nut
12	Screw Bolt
12.1	Screw Nut
13	Guard
13.1	Screw
14	Plug
14.1	Plug Spacer
15	Key
16	Shaft
17	Screw
18	Key
19	IEC Electric Motor



HESC Series

End Suction Centrifugal Pump

Major Parts Material

PUMP PARTS	STANDARD	OPTION ON REQUEST
Pump Volute	Cast Iron	Stainless Steel ASTM304 & ASTM316, Ductile Iron
Impeller	Bronze	Cast Iron, Stainless Steel ASTM304 & ASTM316
Pump Shaft	Steel ASTM420	Stainless Steel ASTM304, ASTM316 & ASTM1045
Shaft Seal	Mechanical Seal	-

Technical Information

Pump Capacity Ranges (Q)	4 m ³ /hr to 500 m ³ /hr
Pump Head Ranges (H)	8 meters to 150 meters
Speed	50Hz 2900 rpm (2 pole) or 1450rpm (4 pole) 60Hz 3500rpm (2 pole) or 1750rpm (4 pole)
Working Temperature Ranges	-10 deg. Celsius to 90 deg. Celsius
Max Working Pressure	10 Bar, 16 Bar on request
Fluid Medium	Non aggressive, clean water or liquids similar to physical properties of clean water

Applications

- **Clean Water Supply**
 - Transfer of water supply
 - Pressure booster for residential & commercial establishments, mid-rise buildings, etc.
 - Pressure booster for light industrial structures, factories, etc.
- **Air Conditioning Systems**
 - Light chilled & condenser water supply
 - Light cooling tower make up water
- **Irrigation & Agriculture**
 - Field & crops irrigation
 - Aqua farming
- **Fire Fighting Systems**
 - Automatic fire sprinkler systems
 - Fire hose cabinets & hydrants



Stellar Pump Australia

Kenwick, Western Australia, 6107

<http://www.stellarpump.com.au>

Authorized Distributor: