



**50 Hz**

**60 Hz**

**Stellar Pump**

# **BDS Series**



**Submersible Borehole Stainless Steel Pump**

## **Product Brochure**

Commercial Water \* Industrial Water \* Deep Well Water \* Municipality Water



## **BDS Series**

Submersible Borehole  
Stainless Steel Pump

### Product Features

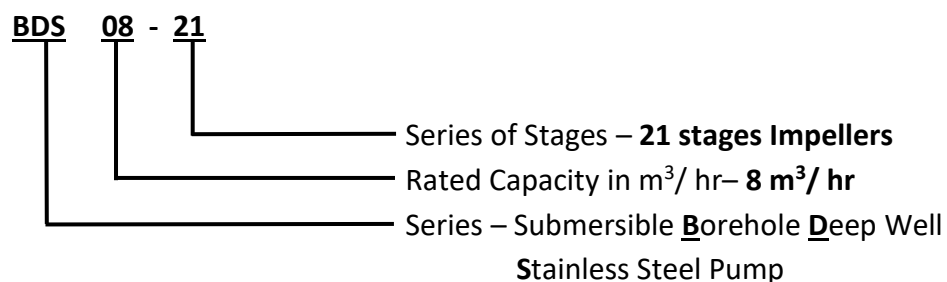
STELLAR BDS Series submersible borehole stainless steel pumps are designed for extreme high in head. The said series is made in stainless steel with built-in non return valve. Cost economical, space saving, high quality & wide series of applications in deep wells, thermal well, reservoir, canals & irrigations. It can be used in commercial establishments, industrial sectors, municipal & water districts.

### Advantages & Benefits

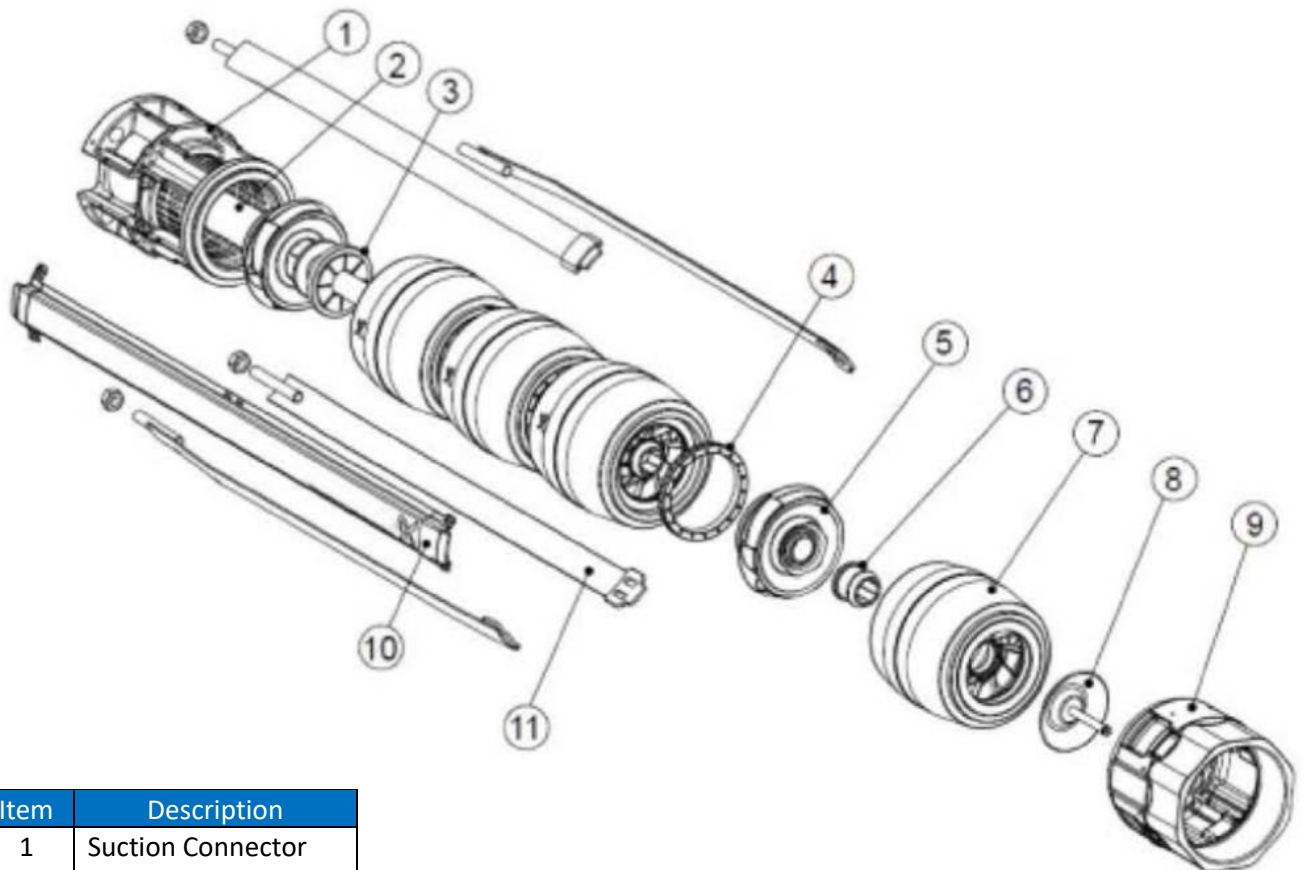
- Pump diffusers, impellers, shaft and inlet / outlet casing, are made of **stainless steel**.
- Built-in **non return check valve** for protection against back flow pressure.
- **Multi-stage design** built for extreme high head.
- Maximum sand sediment concentration is 50g/m<sup>3</sup>
- **Operating noise** level is minimal, producing smooth flow capacity while in operation.

### Model Identification

Example: **BDS 08-21**



### Exploded View



Item	Description
1	Suction Connector (Inlet)
2	Pump Shaft
3	Spacing Washer
4	Seal Ring
5	Impeller
6	Bearing
7	Diffuser Chamber
8	Valve Cap
9	Valve Casing (Outlet)
10	Cable Guard
11	Strap



## BDS Series

Submersible Borehole  
Stainless Steel Pump

### Major Parts Material

PUMP PARTS	STANDARD	OPTION ON REQUEST
Diffuser Chamber	Stainless Steel ASTM304	Stainless Steel ASTM316
Impeller	Stainless Steel ASTM304	Stainless Steel ASTM316
Pump Shaft	Stainless Steel ASTM304	Stainless Steel ASTM316
Inlet & Outlet Casing	Stainless Steel ASTM304	Stainless Steel ASTM316

### Technical Information

Pump Capacity Ranges (Q)	1 m <sup>3</sup> /hr to 160 m <sup>3</sup> /hr
Pump Head Ranges (H)	10 meters to 300 meters
Speed	50Hz 2800rpm (2 pole) 60Hz 3450rpm (2 pole)
Normal Temperature Ranges	-15 deg. Celsius to 50 deg. Celsius
Hot Water Temperature Ranges	-15 deg. Celsius to 90 deg. Celsius
Fluid Medium	Non aggressive, clean water with PH value 4.0 to 10.0, maximum solid sediments of 50g/m <sup>3</sup>

### Applications

- **Clean Water Supply**
  - Transfer of water supply
  - Pressure booster for commercial establishments, high rise buildings, hotels, etc.
  - Pressure booster for industrial structures, factories, etc.
- **Municipal**
  - Water distribution in districts & municipality
  - Pressure booster
  - Deep well & Thermal well
  - River, reservoir, canals
- **Fire Fighting Systems**
  - Automatic fire sprinkler systems
  - Fire hose cabinets & hydrants



**Stellar Pump Australia**

Kenwick, Western Australia, 6107

<http://www.stellarpump.com.au>

**Authorized Distributor:**