

Installation, Operation & Maintenance Manual

HMCS Series Horizontal Multistage Centrifugal Stainless Steel Pump



EXCLUSIVE SECURITY STICKERS

All pumps & motors have exclusive designed hologram security sticker with unique serial number certifying that the said products are original and genuine produced by Stellar Pump Australia.

To validate if product purchased is original & genuine, serial numbers are registered in “**Authentic**” page of Stellar Pump official website <http://www.stellarpump.com.au> Serial numbers can be found in metal nameplates & data information stickers.

If your serial numbers are not on the list, it means

- The list is not yet updated. (*quarterly updating the Authentic page*)
- It has been removed to accommodate newly registered serial numbers.
- The product(s) that you have received is counterfeit of unknown origin.

Original and genuine product data information & technical specifications can be provided within 48 hours to 72 hours upon receipt of requested email. Send your request along with serial number, complete name, company, business address, position & contact details to authenticity@stellarpump.com.au

On behalf of Stellar Pump Australia and authorized local distributor, we appreciate for doing business with us & we trust that you will enjoy using our genuine high performance & reliable products.

STELLAR PUMP AUSTRALIA

TABLE OF CONTENTS:

Section I: Introduction	-----	Page 3
Section II: General Practice	-----	Page 4
Section III: Warranty	-----	Page 4
Section IV: Storage	-----	Page 4
Section V: Installation	-----	Page 5
Section VI: Operation Procedure	-----	Page 6
Section VII: Maintenance Procedure	-----	Page 7
Section VIII: Spare Parts	-----	Page 9
Section IX: Port Connections	-----	Page 9
Section X: Exploded View	-----	Page 10
Section XI: Trouble Shooting	-----	Page 11

SECTION I: INTRODUCTION

STELLAR HMCS Series Horizontal multi-stage centrifugal stainless steel pumps are designed for low pump capacity but high in head. The said series is closed coupled type where motor shaft is connected to pump shaft ensuring proper alignment. Cost economical, space saving, high quality & wide series of applications in residential sector, commercial establishments, low & mid-rise buildings & circulation systems.

This IOM Manual shall be read entirely prior for installation and operation. Stellar Pump shall not be liable for any injuries, damages & pertaining cost due to failure in observing the instructions and maintenance contained in this manual.

The following symbols indicated in this manual are needed to pay attention:



Extreme hazard which will
result of severe injury or
death



Hazard which could result
of personal injury or
severe damage to
property



Hazard which could result
of minor injury or damage
to property

SECTION II. GENERAL PRACTICE

1. Do not operate the pump without proper procedure of priming (pump volute flooded with water).
2. Do not operate the pump if water has sand or any solid particles that could clog the impeller.
3. Maximum Lifting Speed shall be 3 meters per second.
4. Do not operate the pump beyond its limits and parameters.
5. Always shut down the power supply when performing maintenance checkup in electric motor terminal box.
6. Never operate the pump if power supply (voltages) are not within the normal ranges.
7. Never operate the pump without proper procedure of checking pump alignment. Excessive vibration could result of severe damage of pump and motor.
8. For negative suction (suction lift) installation, Net Positive Suction Head (NPSH) should be calculated against the depth of water source (Tank) to avoid cavitation.
9. Always wear personal protective equipment before performing installation, operation and maintenance of this pump.

SECTION III. WARRANTY CONDITION

- This warranty applies against all defective materials and/or faulty manufacture for the period of **One (1) year** from the date of shipment unless specifically stated otherwise.
- Pumps shall be used in accordance for only specific purpose and shall be operated within the designed limits & capabilities.
- Valid replacement of parts and components shall be shipped direct to client free of charge. However, labor cost for replacement of parts, disassembly and assembly of pumps is not included.
- This warranty shall be null and void if other parties have tampered, adjusted and/or repaired the pump.
- For genuine spare parts, kindly refer to authorize distributor or agent of Stellar Pump in your local area.

SECTION IV. STORAGE

- Storage room or warehouse should be clean, free from any dust particles that could enter to sensitive rotating parts of the pump & motor.
- Pump shaft should be rotated 15 to 20 revolutions periodically.
- Protect against corrosion by painting corrosive resistant coating of some unpainted surfaces of the pump.
- Lubricant shall be applied to bearings for long term storage.

SECTION V. INSTALLATION**1. Pump Room or Storage**

- a. Pump room or storage should be clean, free from any construction activities, materials & debris.
- b. Pump room or storage should be ventilated with proper lighting, safety / warning signage & secured with steel door and lock.
- c. Pump room or storage should be provided for provision of crane or chain block for installation & maintenance purposes.
- d. Pump room or storage should be protected against flooding.

2. Mounting

- a. Pumps can be mounted in fabricated steel base plate or concrete base or plinth as long as surface is properly level.
- b. Pump can be installed with rubber isolation, spring isolation or inertia base to avoid transfer of vibration during operation. Kindly refer to manufacturer for appropriate sizes and types.
- c. Pumps should be properly mounted with bolts tighten evenly.

3. Alignment

- a. All pumps ship to country of destination are factory aligned.



- b. Misalignment during transportation, improper handling and installation could occur. Henceforth, inspection of alignment using mechanical dial indicator or laser alignment instrument is mandatory prior for start-up.

4. Piping Connections

- a. Procedure of installation of suction and discharge pipe connections shall be in accordance to related plumbing and/or water system codes & local regulations.
- b. Suction pipe should be equal in diameter to the suction diameter of the HMCS pump.
- c. Net Positive Suction Head (NPSH) should be calculated against the depth of water source (Tank) to avoid cavitation.
- d. For negative suction or suction lift, install priming pipe with isolation valve in suction pipe for proper priming procedure.
- e. Minimum distance of 10 pipe diameter from any fixtures, valves and fittings to pump suction is recommended to produce laminar flow in suction pipe.
- f. Avoid numerous off-setting in suction pipe to avoid producing of cavitation.
- g. Proper support brackets and/or thrust blocks in suction & discharge pipe must be installed.
- h. Valves, fixtures and fittings must be followed in accordance to plumbing and/or water system codes & local regulation with all necessary mechanical valves to protect the pump and piping system during operation.
- i. If pump is supplied with packing gland seal, it is recommended to install drain pipe to avoid flooding of water inside the pump room.

5. Wiring Connections for Electric Motors



- a. Procedure of installation of wires and cables for electric motor shall be in accordance to related electrical code & local regulations.
- b. Wire or cable sizes must be appropriate to Kilowatt (kw) or Horsepower (hp) rating of electric motor. Kindly refer to electrical code & local regulations.
- c. Procedure of wire or cable termination or connection to electric motor terminal box should be followed in accordance with electric code & local regulations.
- d. Wires or cables should be installed in metal conduit or light tight conduit.
- e. Electrical components related in protecting the electric motor against irregular conditions should be installed in control panels.
- f. Motor connection should be properly connected in either delta or wye (Δ / Y) in direct on-line (DOL) connection depending on voltage rating. Refer to the motor nameplate for proper wire connection.

SECTION VI. OPERATION PROCEDURE



1. Pre-start-up & Checking

- a. Wear Personal Protective Gear or Equipment prior for start-up and operation.
- b. Prepare your instrument or tools to observe the performance of the pump.
- c. Check water source. Never operate the pump if water has presence of sand or any solid particles.
- d. Check all valves & fittings. Never activate the pump where suction and discharge isolation valve is closed.
- e. "Prime" the suction pipe prior for start-up. Remove trap air by unscrew the plug located in pump volute.
- f. Inspect mechanical seal if it is properly installed.
- g. Inspect pump shaft alignment. It may misalign during shipment, improper handling and installation.
- h. Pump shaft must be rotated freely by hand.
- i. Pump should be clean, free from any dust particles that might affect the smooth performance of pump & motor bearings.

2. Start-Up

- a. Open the isolation valve in suction pipe.
- b. Make sure suction pipe is properly primed upon opening of the gate valve.



- c. Check the rotation by jump start the motor. Rotation should be same to direction of arrow reflected in pump volute.
- d. Start the driver.
- e. Slowly open the isolation valve in discharge pipe.
- f. Do not operate the pump exceeding to its rated working pressure.
- g. Use calibrated tester or current meter instrument to check if actual current of motor is within the normal range.

- h. Observe the pump volute. If high temperature is observed, immediately shut down the pump and inspect the pump and suction pipe.
- i. Observe pump vibration if it is within the normal range.
- j. Mechanical Seal
 - i. Excessive temperature & vibration could damage the ceramic coating of mechanical seal.
 - ii. Presence of solid particles in water could also damage the mechanical seal.
 - iii. Misalignment of pump and/or motor shaft could also damage the mechanical seal.
- g. Adjust all necessary protective electrical components in control panel for motor protection.
- h. Do not operate electric motors if actual voltage fluctuates. Please refer Section VII. #4.a for reference.

3. Pump Stop



- a. Necessary valves & fittings are required to protect the pump from water hammer effects when stopping the operation. Please refer to plumbing and/or water system codes & local regulations for reference.
- b. If pump will not be used for longer period of time or if climate of freezing exists, close the suction and discharge isolation valve and drain the water inside the pump volute completely.

SECTION VII. MAINTENANCE PROCEDURE

1. General Maintenance

- a. Pump room should be clean & free from any dust particles or any related matters to maintain the smooth operation of pump & motor bearings, mechanical seals and motor exhaust fan.



- b. Floor of pump room or storage should be dry, free from any stagnant water for avoid certain accidents.
- c. No moisture or humidity exists inside the pump room or storage. Necessary ventilation system is required.
- d. Pump room or storage must be secured, free from any thieves and trespassers. Only authorized personnel or maintenance should have an access inside.



- e. Shut down all power supply when performing maintenance routine to avoid certain accidents.
- f. Wear Personal Protective Gear or Equipment before performing maintenance check.
- g. It is highly recommended to update regularly the maintenance record for future reference.

2. Bearings

- a. Bearings are not allowed to operate higher than 70°C. Inspect the bearings if temperature is not within the normal ranges.
- b. Bearings should be replaced every 5000 working hours.

3. Mechanical Seal

- a. Presence of high temperature in pump volute, excessive vibration and poor quality of water will damage the ceramic coating of mechanical seal.
- b. Mechanical seals should be replaced immediately if leakage found during standby and running operation.

4. Electrical Conditions

- a. Power voltage fluctuations
 - i. To maintain the expected life period, do not operate the electric motor if
 - 1. Actual voltage fluctuates beyond tolerance bands of +/- 10% from normal power voltage.
 - 2. Actual voltage fluctuates within tolerance bands of +/- 10% from normal power voltage for more than 60 minutes each day.
 - ii. Electric components for protection against abnormal fluctuation of power supply voltage or to maintain the stability of power supply voltage for entire day is required to avoid premature damage of electric motor.
- b. Electric motor
 - i. Check the termination of wires or cables inside the terminal box. Retighten the bolts and screw if necessary.
 - ii. Bearings should be checked thoroughly. Please refer section VII. #2 for reference.
 - iii. Measure the motor insulation using insulation tester if it is within the normal range.
 - iv. Check body temperature of electric motor. Standard body temperature of electric motor ranges from 40°C to 60°C

SECTION VIII. SPARE PARTS

1. Recommended Spare Parts for HMCS Series Horizontal multi-stage centrifugal stainless steel pumps

a. Intermittent duty

*Item	Description
40	Seal Plate
8	Set of Mechanical Seal
37	Neck Ring Cover
38	Neck Ring
16	Impeller sleeve
17	Impeller sleeves (for 2 stages or more)
18	Bearing
19	First Impeller Cover

* Refer to Section X for reference

b. Continuous operation

*Item	Description
40	Seal Plate
8	Set of Mechanical Seal
16	Impeller sleeve
17	Impeller sleeves (for 2 stages or more)
18	Bearing
19	First Impeller Cover
14	Set of Inducer (Includes #38, #37)
36	Impeller
11	Set of Diffuser (includes #38, #37)
13	Set of Support Diffuser (includes #38, #37)

* Refer to Section X for reference

SECTION IX. PORT CONNECTIONS

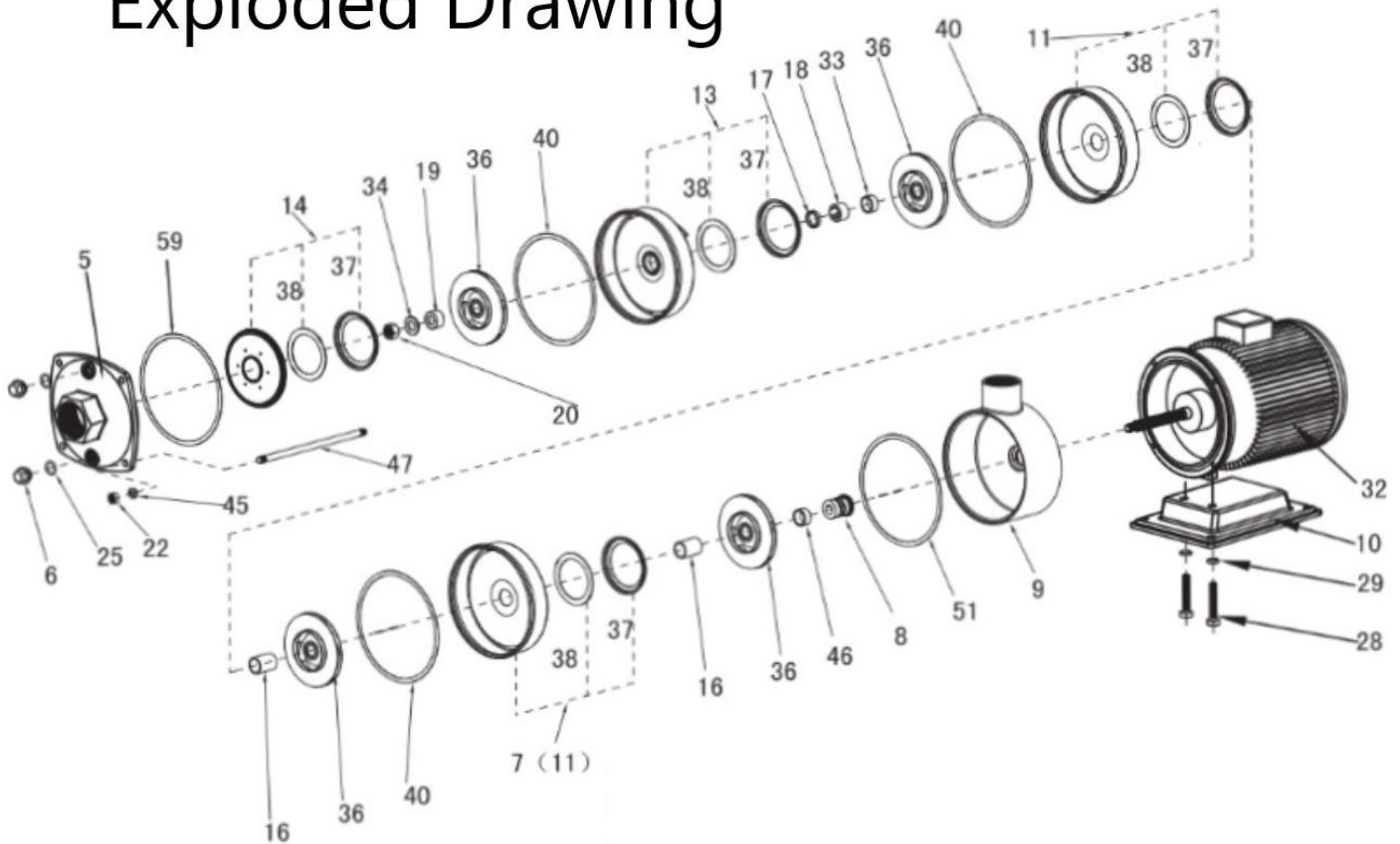
MODEL	HMCS 2	HMCS 4	HMCS 8	HMCS 12	HMCS 16	HMCS 20
Inlet	25.4	31.75	38.1	38.1	50.8	50.8
Outlet	25.4	25.4	31.75	38.1	50.8	50.8

All in millimeters

SECTION X. EXPLODED VIEW

1. HMCS Series Horizontal multi-stage centrifugal stainless steel pumps

Exploded Drawing



Item	Description
5	Inlet & Outlet Chamber
6	Plug
7	Outlet Diffuser
8	Mechanical Seal
9	Discharge
10	Motor Baseplate
11	Diffuser
13	Support Diffuser
14	Inducer
16	Impeller Sleeve
17	Impeller Sleeve
18	Bearing
19	First Impeller Cover
20	Nut
22	Screw

Item	Description
25	O-ring
28	Screw
29	Spring Washer
32	Electric Motor
33	Impeller Sleeve
34	Washer
36	Impeller
37	Neck Ring Cover
38	Neck Ring
40	Seal Plate
45	Spring Washer
46	Sleeve
47	Stay bolt
51	Seal Plate
59	Seal Plate

SECTION XI. TROUBLE SHOOTING

Problems	Causes	Recommended Solutions
No discharge flow	1. Trap air or leak at suction pipe 2. Impeller clogged 3. Damaged shaft and impeller	1. Remove trap air or repair leak. Prime properly the suction pipe 2. Remove solid particles 3. Replace shaft and impeller
Pump loses prime while operating	1. Insufficient NPSH 2. Trap air or leak at suction pipe	1. Reduce suction lift 2. Remove trap air or repair leak
Actual pump capacity and/or head insufficient	1. Insufficient NPSH 2. Actual head greater than expected 3. Trap air or leak at suction pipe 4. Impeller direction wrong 5. Small Impeller diameter 6. Impeller clogged 7. Wear ring defective	1. Reduce suction lift 2. Reduce valves & fittings or replace bigger pump 3. Remove trap air or repair leak. Prime properly the suction pipe 4. Interchanged wires & cables to reverse the rotation 5. Replace impeller but take note BHP vs motor HP 6. Remove solid particles 7. Replace wear ring
Excessive noise and vibration	1. Trap air or leak at suction pipe 2. Impeller direction wrong 3. Misalignment 4. Bearings operating dry condition	1. Remove trap air or repair leak. Prime properly the suction pipe 2. Interchanged wires & cables to reverse the rotation 3. Realign shaft. Use dial indicator for checking of alignment. 4. Apply oil or grease or replace bearings
Bearings produce excessive heat	1. Misalignment 2. Dirty 3. Operating dry condition	1. Realign shaft. Use dial indicator for checking of alignment. 2. Clean the bearing 3. Apply oil or grease
High current readings in electric motor	1. Abnormal power voltage 2. Impeller clogged 3. Misalignment 4. Bearings operating dry condition 5. Low or no motor Insulation	1. Use electric components to stabilize the power voltage 2. Remove solid particles 3. Realign shaft. Use dial indicator for checking of alignment. 4. Apply oil or grease or replace bearings 5. Rewind or replace the motor
Pump volute produces high temperature	1. Trap air or leak at suction pipe 2. Insufficient NPSH	1. Remove trap air or repair leak. Prime properly the suction pipe 2. Reduce suction lift